

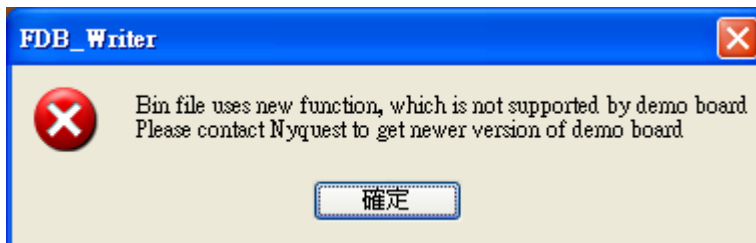
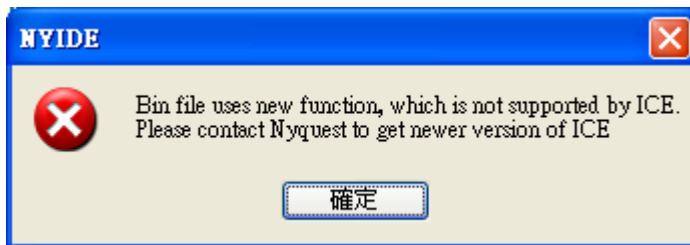
The Notice of Open-Drain and Large PWM Current Function on NY5 Series

Contents: When uses NY5 series IC, must pay attention: Not all IC body provide Open-Drain option of I/O pin. Moreover, Large PWM Current option also only is provided in the partial IC bodies of NY5 series.

Reason: Revision of partial NY5 bodies. When those two mentioned functions are demanded, please refer to the table adhered to this document before choosing IC body.

Demo: The demonstration board providing the two mentioned functions: ICE NY5_COB Ver.B (PCB with blue color) and flash demo board NY5_FDB Ver.D, and the newer version.

Example: When application program uses Open-Drain or Large PWM Current function, and must demonstrates on ICE or FDB, users can have the following prompt if using old version ICE COB (not ICE NY5_COB Ver.B) or old version FDB (not NY_FDB Ver.D),



List: Availability of Open-Drain and Large PWM Current functions.

IC	Open-Drain	Large PWM Current
NY5A003A	-	-
NY5A005A	-	-
NY5A008A	●	-
NY5A011A	●	-
NY5A018A	●	-
NY5A025A	●	-
NY5A035A	●	-
NY5A045A	●	-
NY5A055A	-	-
NY5A065A	-	-
NY5B005A	●	●
NY5B008A	●	●
NY5B011A	●	●
NY5B018A	-	-
NY5B025A	-	-
NY5B035A	●	●
NY5B045A	●	●
NY5B055A	●	●
NY5B065A	●	●
NY5B075A	●	●
NY5B085A	●	●
NY5C112A	●	●
NY5C132A	●	●
NY5C158A	●	●
NY5C185A	●	●
NY5C225A	●	●
NY5C265A	●	●
NY5C305A	●	●
NY5C345A	●	●
NY5C520A	-	-
NY5C640A	-	-

- : Function is available.
- : Function is not available.